

# TOSHIBA

## LED LIGHTING



PRODUCT CATALOGUE 2022

## CONTENTS

### LAMPS

STANDARD A BULB / NON DIMMABLE.....	9
STANDARD CANDLE / NON DIMMABLE.....	10
STANDARD GOLF / NON DIMMABLE.....	11
STANDARD GU10 / NON DIMMABLE.....	12
STANDARD A BULB - 3PACK / NON DIMMABLE.....	13
STANDARD CANDLE - 3PACK / NON DIMMABLE.....	13
STANDARD GOLF - 3PACK / NON DIMMABLE.....	13
STANDARD A BULB / DIMMABLE.....	14
STANDARD CANDLE / DIMMABLE.....	15
STANDARD GOLF / DIMMABLE.....	16
STANDARD GU10 / DIMMABLE.....	17
FILAMENT A BULB / NON DIMMABLE.....	18
FILAMENT CANDLE / NON DIMMABLE.....	19
FILAMENT GOLF / NON DIMMABLE.....	20
FILAMENT G95 / NON DIMMABLE.....	21
FILAMENT ST64 / NON DIMMABLE.....	22
FILAMENT T25 / NON DIMMABLE.....	23
FILAMENT A BULB / DIMMABLE.....	24
FILAMENT CANDLE / DIMMABLE.....	25
FILAMENT GOLF / DIMMABLE.....	26
FILAMENT G95 / DIMMABLE.....	27
FILAMENT ST64 / DIMMABLE.....	28
FILAMENT T25 / DIMMABLE.....	29
TUBE T8.....	30

### INDOOR LUMINAIRES

DOWN LIGHT STANDARD & 3CCT.....	33
BACKLIT PANELS / NON DIMMABLE.....	34
BACKLIT PANELS / DIMMABLE.....	35
CEILING LIGHTS / NON DIMMABLE.....	36
CEILING LIGHTS / DIMMABLE.....	37

### OUTDOOR & INDUSTRIAL LUMINAIRES

FLOOD LIGHTS.....	40
HIGH BAY / NON DIMMABLE.....	42
HIGH BAY PRO / DIMMABLE.....	44
WEATHERPROOF.....	45
TRIPROOF.....	47

### STANDS.....48

Products shown may vary from actual product.  
Product specification and codes subject to change without notice.



## OLYMPIA GROUP



## TOSHIBA

Η **Westnet** αποτελεί συνώνυμο της διανομής προϊόντων πληροφορικής και υψηλής τεχνολογίας.

Είμαστε μέλος του **Olympia Group**, ιδρύσεως Πάνου Γερμανού και από το 2005, οπότε ιδρύθηκε η εταιρεία, επιδιώκουμε να είμαστε πιο δυναμικοί, πιο αποδοτικοί, πιο ισχυροί, και διατηρώντας την ίδια στοχοπροσήλωση: την ικανοποίηση της κάθε συνεργαζόμενης με εμάς εταιρείας, γιατί για εμάς κάθε πελάτης είναι ξεχωριστός.

Με διεθνείς συνεργασίες κορυφαίων brands, έχουμε κατακτήσει ηγετική θέση στην αγορά χάρις στην εγγύηση συνεργασίας που παρέχουμε.

Έχοντας δημιουργήσει τις πλέον αξιόπιστες λειτουργίες διανομής, είμαστε η στρατηγική επιλογή για πελάτες και προμηθευτές.

**1890:** Η **TOSHIBA** εισέρχεται στο χώρο του φωτισμού.

**1985:** Ο όμιλος **Olympia** γίνεται επίσημος & αποκλειστικός αντιπρόσωπος μπαταριών **TOSHIBA** στην Ελλάδα.

**2001:** Ο όμιλος **Olympia** γίνεται επίσημος & αποκλειστικός αντιπρόσωπος μπαταριών **TOSHIBA** στην Ευρώπη, Μέση Ανατολή & Αφρική.

**2020:** Ο όμιλος **Olympia** γίνεται επίσημος & αποκλειστικός αντιπρόσωπος των προϊόντων φωτισμού **TOSHIBA** στην Ελλάδα.

# TOSHIBA

ΙΑΠΩΝΙΚΗ ΤΕΧΝΟΛΟΓΙΑ

ΕΓΓΥΗΜΕΝΗ  
Εξοικονόμηση Ενέργειας



92%

Εξοικονόμηση ενέργειας έως 92%

ΕΓΓΥΗΜΕΝΗ  
Ποιότητα Προϊόντων



Εγγύηση 5 ετών σε όλα τα προϊόντα

TOSHIBA LIGHTING

# LED IS MORE



ΠΟΙΟΤΗΤΑ ΦΩΤΟΣ



ΧΡΟΝΟΣ / ΔΙΑΡΚΕΙΑ ΖΩΗΣ



ΕΝΕΡΓΕΙΑΚΗ ΑΠΟΔΟΣΗ



ΜΕΓΑΛΗ ΓΚΑΜΑ  
ΠΡΟΪΟΝΤΩΝ



ΦΙΛΙΚΟ ΠΡΟΣ  
ΤΟ ΠΕΡΙΒΑΛΛΟΝ



ΑΝΘΕΚΤΙΚΟΤΗΤΑ /  
ΑΝΤΟΧΗ

and more...



ΔΕΝ ΤΡΕΜΟΠΑΙΖΕΙ



ΔΕΝ ΕΙΝΑΙ  
ΕΚΤΥΦΛΩΤΙΚΟ



ΔΙΑΧΕΕΤΑΙ  
ΟΜΟΙΟΜΟΡΦΑ



ΡΕΑΛΙΣΤΙΚΗ  
ΑΠΟΔΟΣΗ ΧΡΩΜΑΤΩΝ

# ΕΤΙΚΕΤΕΣ ΕΝΕΡΓΕΙΑΚΗΣ ΑΠΟΔΟΣΗΣ



Με την τεχνολογία LED αναπτύχθηκαν προϊόντα που συνεχώς αυξάναν την απόδοσή τους ως προς την κατανάλωση ενέργειας. Αυτό είχε σαν αποτέλεσμα στις ετικέτες ενεργειακής απόδοσης να μπαίνουν σήματα όπως A+, A++, A+++ προκειμένου να αποτυπωθεί η καλύτερη απόδοση του προϊόντος.

Με σκοπό να αντιμετωπιστεί η σύγχυση που δημιουργούσαν τα πολλά «++++» δίπλα στο A, η ΕΕ έδωσε οδηγία να γίνει **αναδιάρθρωση** της κλίμακας.

Το ίδιο προϊόν λοιπόν - που στην προηγούμενη κλίμακα χαρακτηριζόταν ως A+ - στην νέα κλίμακα τοποθετείται σε πολύ χαμηλότερο επίπεδο (E ή F), αν και **παραμένει το ίδιο ισχυρό** σχετικά με την ενεργειακή του απόδοση.

Η αλλαγή αυτή είχε μοναδικό σκοπό να δοθεί χώρος για την σήμανση των προϊόντων του μέλλοντος, που θα πετύχουν ακόμα καλύτερες αποδόσεις ενεργειακής κατανάλωσης, ως συνέπεια της εξέλιξης της τεχνολογίας.

**ΠΑΛΑΙΟΤΗΡΗ ΕΤΙΚΕΤΑ**

**ΝΕΑ ΕΤΙΚΕΤΑ**

**Επεξήγηση Σήμανσης**

1. Η εταιρία που παράγει ή εισάγει την λάμπα
2. Το μοντέλο του προϊόντος
3. Η νέα κλίμακα ενεργειακής απόδοσης A έως G
4. Η σταθμισμένη ενεργειακή απόδοση ανά 1000 ώρες
5. QR code το οποίο παραπέμπει στα χαρακτηριστικά του προϊόντος που διατίθενται δημόσια στην Ευρωπαϊκή βάση δεδομένων.

# ΘΕΡΜΟΚΡΑΣΙΑ ΧΡΩΜΑΤΟΣ



**3000K**  
ΘΕΡΜΟ

**4000K**  
ΟΥΔΕΤΕΡΟ

**6500K**  
ΨΥΧΡΟ



3000K



4000K



6500K

*Η θερμοκρασία χρώματος αποτυπώνει την αίσθηση που μας δίνει το φως μέσα στο χώρο.*

Πιο συγκεκριμένα περιγράφει την θερμή ή ψυχρή αίσθηση που μπορεί να δίνει μία πηγή φωτός και μετριέται με βάση την κλίμακα Kelvin (K).

**ΤΟ ΘΕΡΜΟ (3000K) ΧΡΩΜΑ** έχει μία ελαφρά «κίτρινη» απόχρωση προσφέρει μία ζεστασιά στο χώρο και ευνοεί τη χαλάρωση.

**ΤΟ ΟΥΔΕΤΕΡΟ (4000K) ΧΡΩΜΑ** είναι ένας καθαρός και αναζωογονητικός τόνος, ο οποίος προτιμάται σε χώρους που απαιτείται ευκρίνεια.

**ΤΟ ΨΥΧΡΟ (6500K)** δίνει έναν ελαφρώς μπλε τόνο δημιουργώντας μεγαλύτερη αντίθεση.

Δημιουργήστε την ατμόσφαιρα που ταιριάζει στο στυλ ή τη διάθεσή σας, επιλέγοντας φωτισμό με την κατάλληλη θερμοκρασία χρώματος!



3000K



4000K



6500K

**TOSHIBA LED:** Διαθέσιμα σε 3 εκδόσεις

**ΘΕΡΜΟ (3000K):** Για το σαλόνι και την κρεβατοκάμαρα

**ΟΥΔΕΤΕΡΟ (4000K):** Για την κουζίνα και το γραφείο

**ΨΥΧΡΟ (6500K):** Για το μπάνιο και την αποθήκη

# COLOR RENDERING INDEX (CRI)



## *Η Αλήθεια στο Φως!* *Απολαύστε τα φυσικά χρώματα γύρω σας.*

Ενώ λοιπόν η **θερμοκρασία χρώματος (CCT)** αποτυπώνει την θερμή ή ψυχρή αίσθηση του φωτός σε έναν χώρο, το **CRI** περιγράφει πόσο καλή είναι η απόδοση των χρωμάτων των αντικειμένων που φωτίζονται.

Ο δείκτης CRI (Color Rendering Index) μετράει την ικανότητα μίας τεχνικής πηγής φωτός να αποδίδει με ακρίβεια τα φυσικά χρώματα των αντικειμένων που φωτίζει.



**TOSHIBA LED:** Διαθέσιμα σε 3 εκδόσεις

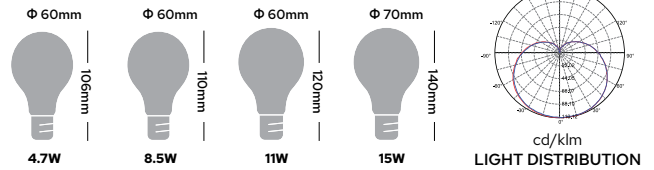








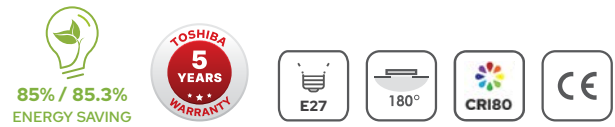
# LAMPS



STANDARD A BULB NON DIMMABLE



**4.7W**   **8.5W**   **11W**   **15W**  
 **40W**    **60W**    **75W**    **100W**



WESTNET CODE	WESTNET DESCRIPTION	EAN BARCODE	WATT EQ.	LUMEN	CRI	DIM	BEAM ANGLE	BASE	LIFESPAN	ENERGY CLASS
00168795	TOSHIBA LED N_STD A60 E27 4.7W 3000K	4711112384396								
00168797	TOSHIBA LED N_STD A60 E27 4.7W 4000K	4711112384402	40W	470 LM	80	NO	180°	E27	15,000h	F
00168799	TOSHIBA LED N_STD A60 E27 4.7W 6500K	4711112384419								
00168800	TOSHIBA LED N_STD A60 E27 8.5W 3000K	4711112384426								
00168802	TOSHIBA LED N_STD A60 E27 8.5W 4000K	4711112384433	60W	806 LM	80	NO	180°	E27	15,000h	F
00168804	TOSHIBA LED N_STD A60 E27 8.5W 6500K	4711112384440								
00168806	TOSHIBA LED N_STD A60 E27 11W 3000K	4711112384457								
00168807	TOSHIBA LED N_STD A60 E27 11W 4000K	4711112384464	75W	1055 LM	80	NO	180°	E27	15,000h	F
00168808	TOSHIBA LED N_STD A60 E27 11W 6500K	4711112384471								
00168809	TOSHIBA LED N_STD A70 E27 15W 3000K	4711112384488								
00168810	TOSHIBA LED N_STD A70 E27 15W 4000K	4711112384495	100W	1521 LM	80	NO	180°	E27	15,000h	F
00168811	TOSHIBA LED N_STD A70 E27 15W 6500K	4711112384501								

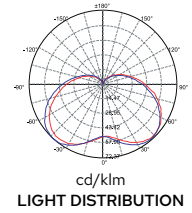
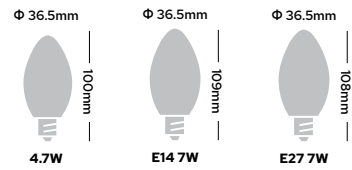
STANDARD CANDLE NON DIMMABLE



E27

E14

4.7W    7W  
 ↓        ↓  
 40W    60W



87.5% / 88.80 ENERGY SAVING

TOSHIBA 5 YEARS WARRANTY

E14/E27

220°

CRIBO

CE

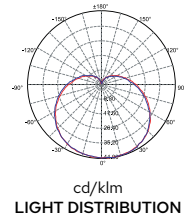
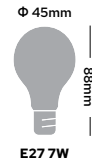
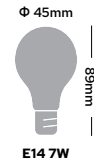
WESTNET CODE	WESTNET DESCRIPTION	EAN BARCODE	WATT EQ.	LUMEN	CRI	DIM	BEAM ANGLE	BASE	LIFESPAN	ENERGY CLASS
00168815	TOSHIBA LED_N_STD C37 E14 4.7W 3000K	4711112384600								
00168817	TOSHIBA LED_N_STD C37 E14 4.7W 4000K	4711112384617	40W	470 LM	80	NO	220°	E14	15,000h	F
00168818	TOSHIBA LED_N_STD C37 E14 4.7W 6500K	4711112384624								
00168820	TOSHIBA LED_N_STD C37 E27 4.7W 3000K	4711112384570								
00168826	TOSHIBA LED_N_STD C37 E27 4.7W 4000K	4711112384587	40W	470 LM	80	NO	220°	E27	15,000h	F
00168828	TOSHIBA LED_N_STD C37 E27 4.7W 6500K	4711112384594								
00168835	TOSHIBA LED_N_STD C37 E14 7W 3000K	4711112384662								
00168836	TOSHIBA LED_N_STD C37 E14 7W 4000K	4711112384679	60W	806 LM	80	NO	220°	E14	15,000h	E
00168838	TOSHIBA LED_N_STD C37 E14 7W 6500K	4711112384686								
00168839	TOSHIBA LED_N_STD C37 E27 7W 3000K	4711112384631								
00168840	TOSHIBA LED_N_STD C37 E27 7W 4000K	4711112384648	60W	806 LM	80	NO	220°	E27	15,000h	E
00168841	TOSHIBA LED_N_STD C37 E27 7W 6500K	4711112384655								

STANDARD GOLF NON DIMMABLE



E14      4.7W      7W      E27

↓      ↓  
**40W**    **60W**



87.5% / 88.80  
ENERGY SAVING

TOSHIBA  
5 YEARS  
WARRANTY

E14/E27

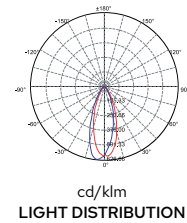
180°

CRIB0

CE

WESTNET CODE	WESTNET DESCRIPTION	EAN BARCODE	WATT EQ.	LUMEN	CRI	DIM	BEAM ANGLE	BASE	LIFESPAN	ENERGY CLASS
00168849	TOSHIBA LED N_STD G45 E14 4.7W 3000K	4711112384785								
00168850	TOSHIBA LED N_STD G45 E14 4.7W 4000K	4711112384792	40W	470 LM	80	NO	180°	E14	15,000h	F
00168851	TOSHIBA LED N_STD G45 E14 4.7W 6500K	4711112384808								
00168852	TOSHIBA LED N_STD G45 E27 4.7W 3000K	4711112384754								
00168853	TOSHIBA LED N_STD G45 E27 4.7W 4000K	4711112384761	40W	470 LM	80	NO	180°	E27	15,000h	F
00168854	TOSHIBA LED N_STD G45 E27 4.7W 6500K	4711112384778								
00168855	TOSHIBA LED N_STD G45 E14 7W 3000K	4711112384846								
00168856	TOSHIBA LED N_STD G45 E14 7W 4000K	4711112384853	60W	806 LM	80	NO	180°	E14	15,000h	E
00168857	TOSHIBA LED N_STD G45 E14 7W 6500K	4711112384860								
00168858	TOSHIBA LED N_STD G45 E27 7W 3000K	4711112384815								
00168859	TOSHIBA LED N_STD G45 E27 7W 4000K	4711112384822	60W	806 LM	80	NO	180°	E27	15,000h	E
00168860	TOSHIBA LED N_STD G45 E27 7W 6500K	4711112384839								

STANDARD GU10 NON DIMMABLE



4W  
↓  
50W

5.5W  
↓  
63W

7W  
↓  
76W

WESTNET CODE	WESTNET DESCRIPTION	EAN BARCODE	WATT EQ.	LUMEN	CRI	DIM	BEAM ANGLE	BASE	LIFESPAN	ENERGY CLASS
00168861	TOSHIBA LED N_STD GU10 4W 3000K	4711112384877								
00168862	TOSHIBA LED N_STD GU10 4W 4000K	4711112384884	50W	345 LM	80	NO	38°	GU10	15,000h	F
00168863	TOSHIBA LED N_STD GU10 4W 6500K	4711112384891								
00168864	TOSHIBA LED N_STD GU10 5.5W 3000K	4711112384907								
00168865	TOSHIBA LED N_STD GU10 5.5W 4000K	4711112384914	63W	450 LM	80	NO	38°	GU10	15,000h	F
00168866	TOSHIBA LED N_STD GU10 5.5W 6500K	4711112384921								
00168867	TOSHIBA LED N_STD GU10 7W 3000K	4711112384938								
00168868	TOSHIBA LED N_STD GU10 7W 4000K	4711112384945	76W	560 LM	80	NO	38°	GU10	15,000h	F
00168869	TOSHIBA LED N_STD GU10 7W 6500K	4711112384952								

TOSHIBA PROMO PACKS

**STANDARD A BULB  
3PACK NON DIMMABLE**



WESTNET CODE	WESTNET DESCRIPTION	EAN BARCODE	WATT EQ.	LUMEN	CRI	DIM	BEAM ANGLE	BASE	LIFESPAN	ENERGY CLASS
00168871	TOSHIBA LED N_STD A60 E27 8.5W 3000K	4711112385058								
00168876	TOSHIBA LED N_STD A60 E27 8.5W 4000K	4711112385355	60W	806 LM	80	NO	180°	E27	15,000h	F
00168877	TOSHIBA LED N_STD A60 E27 8.5W 5000K	4711112385362								

**STANDARD CANDLE  
3PACK NON DIMMABLE**



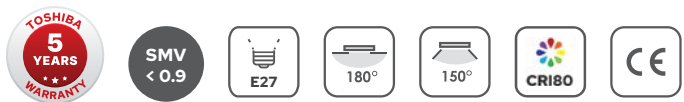
WESTNET CODE	WESTNET DESCRIPTION	EAN BARCODE	WATT EQ.	LUMEN	CRI	DIM	BEAM ANGLE	BASE	LIFESPAN	ENERGY CLASS
00168872	TOSHIBA LED N_STD C37 E14 4.7W 3000K	4711112385065								
00168873	TOSHIBA LED N_STD C37 E14 4.7W 4000K	4711112385379	40W	470 LM	80	NO	220°	E14	15,000h	F

**STANDARD GOLF  
3PACK NON DIMMABLE**



WESTNET CODE	WESTNET DESCRIPTION	EAN BARCODE	WATT EQ.	LUMEN	CRI	DIM	BEAM ANGLE	BASE	LIFESPAN	ENERGY CLASS
00168874	TOSHIBA LED N_STD G45 E27 4.7W 3000K	4711112385386								
00168875	TOSHIBA LED N_STD G45 E27 4.7W 4000K	4711112385393	40W	470 LM	80	NO	180°	E27	15,000h	F

STANDARD A BULB DIMMABLE



WESTNET CODE	WESTNET DESCRIPTION	EAN BARCODE	WATT	LUMEN	CRI	DIM	BEAM ANGLE	BASE	LIFESPAN	ENERGY CLASS
00172674	TOSHIBA LED STD A60 E27 5.5W 3000K DIM	4711112387236								
00172676	TOSHIBA LED STD A60 E27 5.5W 4000K DIM	4711112387243	5.5W	470 LM	80	YES	180°	E27	15,000h	F
00172678	TOSHIBA LED STD A60 E27 5.5W 6500K DIM	4711112387250								
00172679	TOSHIBA LED STD A60 E27 8.5W 3000K DIM	4711112387267								
00172680	TOSHIBA LED STD A60 E27 8.5W 4000K DIM	4711112387274	8.5W	806 LM	80	YES	180°	E27	15,000h	F
00172681	TOSHIBA LED STD A60 E27 8.5W 6500K DIM	4711112387281								
00172682	TOSHIBA LED STD A60 E27 11W 3000K DIM	4711112387298								
00172683	TOSHIBA LED STD A60 E27 11W 4000K DIM	4711112387304	11W	1055 LM	80	YES	180°	E27	15,000h	F
00172684	TOSHIBA LED STD A60 E27 11W 6500K DIM	4711112387311								
00172685	TOSHIBA LED STD A65 E27 14W 3000K DIM	4711112387328								
00172686	TOSHIBA LED STD A65 E27 14W 4000K DIM	4711112387335	14W	1521 LM	80	YES	150°	E27	15,000h	F
00172687	TOSHIBA LED STD A65 E27 14W 6500K DIM	4711112387342								

STANDARD CANDLE DIMMABLE



E27

E14



WESTNET CODE	WESTNET DESCRIPTION	EAN BARCODE	WATT	LUMEN	CRI	DIM	BEAM ANGLE	BASE	LIFESPAN	ENERGY CLASS
00172688	TOSHIBA LED STD C35 E14 5W 3000K DIM	4711112387359								
00172692	TOSHIBA LED STD C35 E14 5W 4000K DIM	4711112387366	5W	470 LM	80	YES	240°	E14	15,000h	F
00172693	TOSHIBA LED STD C35 E14 5W 6500K DIM	4711112387373								
00172695	TOSHIBA LED STD C35 E27 5W 3000K DIM	4711112387380								
00172696	TOSHIBA LED STD C35 E27 5W 4000K DIM	4711112387397	5W	470 LM	80	YES	240°	E27	15,000h	F
00172697	TOSHIBA LED STD C35 E27 5W 6500K DIM	4711112387403								



STANDARD GOLF DIMMABLE



E14

E27



WESTNET CODE	WESTNET DESCRIPTION	EAN BARCODE	WATT	LUMEN	CRI	DIM	BEAM ANGLE	BASE	LIFESPAN	ENERGY CLASS
00172698	TOSHIBA LED STD G45 E14 5W 3000K DIM	4711112387410								
00172699	TOSHIBA LED STD G45 E14 5W 4000K DIM	4711112387427	5W	470 LM	80	YES	150°	E14	15,000h	F
00172700	TOSHIBA LED STD G45 E14 5W 6500K DIM	4711112387434								
00172701	TOSHIBA LED STD G45 E27 5W 3000K DIM	4711112387441								
00172702	TOSHIBA LED STD G45 E27 5W 4000K DIM	4711112387458	5W	470 LM	80	YES	150°	E27	15,000h	F
00172703	TOSHIBA LED STD G45 E27 5W 6500K DIM	4711112387465								

STANDARD GU 10 DIMMABLE



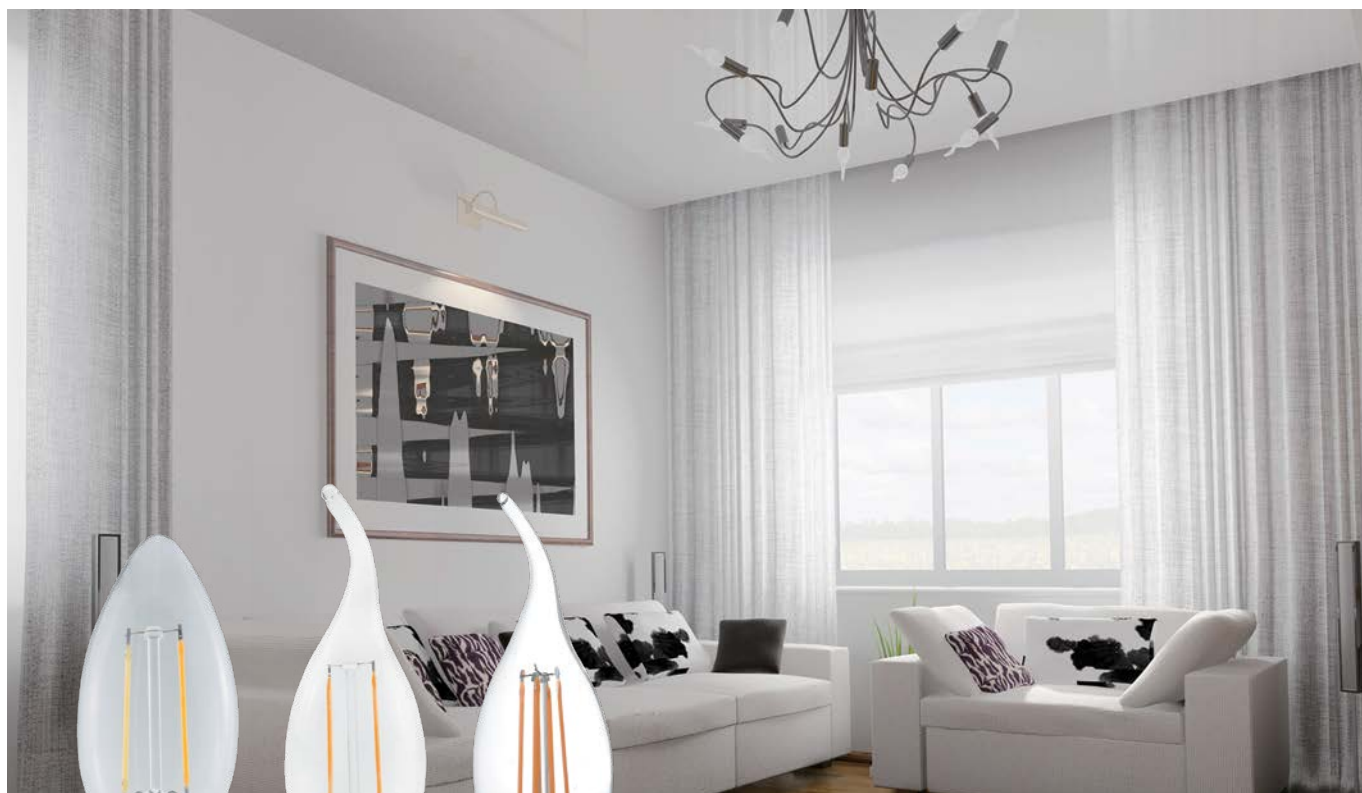
WESTNET CODE	WESTNET DESCRIPTION	EAN BARCODE	WATT	LUMEN	CRI	DIM	BEAM ANGLE	BASE	LIFESPAN	ENERGY CLASS
00172704	TOSHIBA LED STD GU10 5W 3000K DIM	4711112387472								
00172705	TOSHIBA LED STD GU10 5W 4000K DIM	4711112387489	5W	345 LM	80	YES	36°	GU10	15,000h	G
00172706	TOSHIBA LED STD GU10 5W 6500K DIM	4711112387496								
00172707	TOSHIBA LED STD GU10 7W 3000K DIM	4711112387502								
00172708	TOSHIBA LED STD GU10 7W 4000K DIM	4711112387519	7W	520 LM	80	YES	36°	GU10	15,000h	F
00172709	TOSHIBA LED STD GU10 7W 6500K DIM	4711112387526								

FILAMENT A BULB NON DIMMABLE



WESTNET CODE	WESTNET DESCRIPTION	EAN BARCODE	GLASS	WATT	LUMEN	CRI	DIM	BEAM ANGLE	BASE	LIFESPAN	ENERGY CLASS
00172720	TOSHIBA LED FILAMENT (SMOKY) A60 E27 4.5W 1800K	4711112386840	SMOKY	4.5W	225 LM	80	NO	270°	E27	15,000h	G
00172719	TOSHIBA LED FILAMENT (AMBER) A60 E27 4.5W 2200K	4711112386833	AMBER	4.5W	400 LM	80	NO	270°	E27	15,000h	F
00172721	TOSHIBA LED FILAMENT (SPIRAL AMBER) A60 E27 4.5W 2200K	4711112386857	SPIRAL AMBER	4.5W	400 LM	80	NO	270°	E27	15,000h	F
00172710	TOSHIBA LED FILAMENT A60 E27 4.5W 2700K	4711112384211	CLEAR	4.5W	470 LM	80	NO	270°	E27	15,000h	F
00172716	TOSHIBA LED FILAMENT A60 E27 7W 2700K	4711112384228	CLEAR	7W	806 LM	80	NO	270°	E27	15,000h	E
00172717	TOSHIBA LED FILAMENT A60 E27 8.5W 2700K	4711112384235	CLEAR	8.5W	1055 LM	80	NO	270°	E27	15,000h	E
00172718	TOSHIBA LED FILAMENT A60 E27 10.5W 2700K	4711112384242	CLEAR	10.5W	1521 LM	80	NO	270°	E27	15,000h	D

FILAMENT CANDLE NON DIMMABLE



WESTNET CODE	WESTNET DESCRIPTION	EAN BARCODE	GLASS	WATT	LUMEN	CRI	DIM	BEAM ANGLE	BASE	LIFESPAN	ENERGY CLASS
00172722	TOSHIBA LED FILAMENT C35 E14 2.5W 2700K	4711112384273	CLEAR	2.5W	250 LM	80	NO	270°	E14	15,000h	F
00172723	TOSHIBA LED FILAMENT C35 E14 4.5W 2700K	4711112384280	CLEAR	4.5W	470 LM	80	NO	270°	E14	15,000h	F
00172724	TOSHIBA LED FILAMENT CF35 E14 2.5W 2700K	4711112384310	CLEAR	2.5W	250 LM	80	NO	270°	E14	15,000h	F
00172725	TOSHIBA LED FILAMENT CF35 E14 4.5W 2700K	4711112384327	CLEAR	4.5W	470 LM	80	NO	270°	E14	15,000h	F

FILAMENT GOLF NON DIMMABLE



WESTNET CODE	WESTNET DESCRIPTION	EAN BARCODE	GLASS	WATT	LUMEN	CRI	DIM	BEAM ANGLE	BASE	LIFESPAN	ENERGY CLASS
00172728	TOSHIBA LED FILAMENT G45 E14 2.5W 2700K	4711112384358	CLEAR	2.5W	250 LM	80	NO	270°	E14	15,000h	F
00172729	TOSHIBA LED FILAMENT G45 E14 4.5W 2700K	4711112384365		4.5W	470 LM						
00172730	TOSHIBA LED FILAMENT G45 E27 2.5W 2700K	4711112384334	CLEAR	2.5W	250 LM	80	NO	270°	E27	15,000h	F
00172731	TOSHIBA LED FILAMENT G45 E27 4.5W 2700K	4711112384341		4.5W	470 LM						
00172732	TOSHIBA LED FILAMENT (RED) G45 E14 4.5W	4711112386888	COLORED RED GLASS	4.5W	-	-	NO	270°	E14	15,000h	-
00172733	TOSHIBA LED FILAMENT (RED) G45 E27 4.5W	4711112386895							E27		
00172734	TOSHIBA LED FILAMENT (BLUE) G45 E14 4.5W	4711112386901	COLORED BLUE GLASS	4.5W	-	-	NO	270°	E14	15,000h	-
00172735	TOSHIBA LED FILAMENT (BLUE) G45 E27 4.5W	4711112386918							E27		
00172736	TOSHIBA LED FILAMENT (YELLOW) G45 E14 4.5W	4711112386925	COLORED YELLOW GLASS	4.5W	-	-	NO	270°	E14	15,000h	-
00172737	TOSHIBA LED FILAMENT (YELLOW) G45 E27 4.5W	4711112386932							E27		

FILAMENT G95 NON DIMMABLE



WESTNET CODE	WESTNET DESCRIPTION	EAN BARCODE	GLASS	WATT	LUMEN	CRI	DIM	BEAM ANGLE	BASE	LIFESPAN	ENERGY CLASS
00172738	TOSHIBA LED FILAMENT G95 E27 7W 2700K	4711112384389	CLEAR	7W	806 LM	80	NO	270°	E27	15,000h	E
00172739	TOSHIBA LED FILAMENT G95 E27 8.5W 2700K	4711112386949	CLEAR	8.5W	1055 LM	80	NO	270°	E27	15,000h	E
00172740	TOSHIBA LED FILAMENT G95 E27 11W 2700K	4711112386956	CLEAR	11W	1521 LM	80	NO	270°	E27	15,000h	D

FILAMENT ST64 NON DIMMABLE



WESTNET CODE	WESTNET DESCRIPTION	EAN BARCODE	GLASS	WATT	LUMEN	CRI	DIM	BEAM ANGLE	BASE	LIFESPAN	ENERGY CLASS
00172741	TOSHIBA LED FILAMENT ST64 E27 4.5W 2700K	4711112386963	CLEAR	4.5W	470 LM	80	NO	270°	E27	15,000h	F
00172743	TOSHIBA LED FILAMENT ST64 E27 7W 2700K	4711112386970	CLEAR	7W	806 LM	80	NO	270°	E27	15,000h	E
00172744	TOSHIBA LED FILAMENT (AMBER) ST64 E27 4.5W 2200K	4711112386987	AMBER	4.5W	400 LM	80	NO	270°	E27	15,000h	F

FILAMENT T25 NON DIMMABLE



WESTNET CODE	WESTNET DESCRIPTION	EAN BARCODE	GLASS	WATT	LUMEN	CRI	DIM	BEAM ANGLE	BASE	LIFESPAN	ENERGY CLASS
00172745	TOSHIBA LED FILAMENT T25 E14 4.5W 2700K	4711112387007	CLEAR	4.5W	470 LM	80	NO	270°	E14	15,000h	F
00172746	TOSHIBA LED FILAMENT (AMBER) T25 E14 4.5W 2200K	4711112387014	AMBER	4.5W	400 LM	80	NO	270°	E14	15,000h	F



FILAMENT A BULB DIMMABLE



WESTNET CODE	WESTNET DESCRIPTION	EAN BARCODE	GLASS	WATT	LUMEN	CRI	DIM	BEAM ANGLE	BASE	LIFESPAN	ENERGY CLASS
00172748	TOSHIBA LED FILAMENT A60 E27 4.5W 2700K DIM	4711112387021	CLEAR	4.5W	470 LM	80	YES	270°	E27	15,000h	F
00172749	TOSHIBA LED FILAMENT A60 E27 7W 2700K DIM	4711112387038	CLEAR	7W	806 LM	80	YES	270°	E27	15,000h	E
00172750	TOSHIBA LED FILAMENT A60 E27 9W 2700K DIM	4711112387045	CLEAR	9W	1055 LM	80	YES	270°	E27	15,000h	E
00172751	TOSHIBA LED FILAMENT A60 E27 11W 2700K DIM	4711112387052	CLEAR	11W	1521 LM	80	YES	270°	E27	15,000h	D
00172752	TOSHIBA LED FILAMENT (AMBER) A60 E27 4.5W 2200K DIM	4711112387069	AMBER	4.5W	400 LM	80	YES	270°	E27	15,000h	F
00172753	TOSHIBA LED FILAMENT (SMOKY) A60 E27 4.5W 1800K DIM	4711112387076	SMOKY	4.5W	225 LM	80	YES	270°	E27	15,000h	G
00172754	TOSHIBA LED FILAMENT (SPIRAL AMBER) A60 E27 4.9W 2200K DIM	4711112387083	SPIRAL AMBER	4.9W	400 LM	80	YES	270°	E27	15,000h	G

FILAMENT CANDLE DIMMABLE



WESTNET CODE	WESTNET DESCRIPTION	EAN BARCODE	GLASS	WATT	LUMEN	CRI	DIM	BEAM ANGLE	BASE	LIFESPAN	ENERGY CLASS
00172755	TOSHIBA LED FILAMENT C35 E14 2.5W 2700K DIM	4711112387090	CLEAR	2.5W	250 LM	80	YES	270°	E14	15,000h	F
00172756	TOSHIBA LED FILAMENT C35 E14 4.5W 2700K DIM	4711112387106	CLEAR	4.5W	470 LM	80	YES	270°	E14	15,000h	F
00172757	TOSHIBA LED FILAMENT CF35 E14 2.5W 2700K DIM	4711112387113	CLEAR	2.5W	250 LM	80	YES	270°	E14	15,000h	F
00172758	TOSHIBA LED FILAMENT CF35 E14 4.5W 2700K DIM	4711112387120	CLEAR	4.5W	470 LM	80	YES	270°	E14	15,000h	F

FILAMENT GOLF DIMMABLE



WESTNET CODE	WESTNET DESCRIPTION	EAN BARCODE	GLASS	WATT	LUMEN	CRI	DIM	BEAM ANGLE	BASE	LIFESPAN	ENERGY CLASS
00172759	TOSHIBA LED FILAMENT G45 E14 2.5W 2700K DIM	4711112387137	CLEAR	2.5W	250 LM	80	YES	270°	E14	15,000h	F
00172760	TOSHIBA LED FILAMENT G45 E14 4.5W 2700K DIM	4711112387144	CLEAR	4.5W	470 LM	80	YES	270°	E14	15,000h	F

FILAMENT G95 DIMMABLE



WESTNET CODE	WESTNET DESCRIPTION	EAN BARCODE	GLASS	WATT	LUMEN	CRI	DIM	BEAM ANGLE	BASE	LIFESPAN	ENERGY CLASS
00172761	TOSHIBA LED FILAMENT G95 E27 7W 2700K DIM	4711112387151	CLEAR	7W	806 LM	80	YES	270°	E27	15,000h	E
00172762	TOSHIBA LED FILAMENT G95 E27 9W 2700K DIM	4711112387168	CLEAR	9W	1055 LM	80	YES	270°	E27	15,000h	E
00172763	TOSHIBA LED FILAMENT G95 E27 11W 2700K DIM	4711112387175	CLEAR	11W	1521 LM	80	YES	270°	E27	15,000h	D

FILAMENT ST64 DIMMABLE



WESTNET CODE	WESTNET DESCRIPTION	EAN BARCODE	GLASS	WATT	LUMEN	CRI	DIM	BEAM ANGLE	BASE	LIFESPAN	ENERGY CLASS
00172764	TOSHIBA LED FILAMENT ST64 E27 4.5W 2700K DIM	4711112387182	CLEAR	4.5W	470 LM	80	YES	270°	E27	15,000h	F
00172765	TOSHIBA LED FILAMENT ST64 E27 7W 2700K DIM	4711112387199	CLEAR	7W	806 LM	80	YES	270°	E27	15,000h	E
00172766	TOSHIBA LED FILAMENT (AMBER) ST64 E27 4.5W 2200K DIM	4711112387205	AMBER	4.5W	400 LM	80	YES	270°	E27	15,000h	F

FILAMENT T25 DIMMABLE



WESTNET CODE	WESTNET DESCRIPTION	EAN BARCODE	GLASS	WATT	LUMEN	CRI	DIM	BEAM ANGLE	BASE	LIFESPAN	ENERGY CLASS
00172767	TOSHIBA LED FILAMENT T25 E14 4.5W 2700K DIM	4711112387212	CLEAR	4.5W	470 LM	80	YES	270°	E14	15,000h	F
00172768	TOSHIBA LED FILAMENT (AMBER) T25 E14 4.5W 2200K DIM	4711112387229	AMBER	4.5W	400 LM	80	YES	270°	E14	15,000h	F

TUBE T8



WESTNET CODE	WESTNET DESCRIPTION	EAN BARCODE	WATT	LUMEN	CRI	STARTER	DIM	BEAM ANGLE	BASE	LIFESPAN	ENERGY CLASS
00172777	TOSHIBA LED T8 9W 600mm 3000K	4711112387908									
00172778	TOSHIBA LED T8 9W 600mm 4000K	4711112387915									
00172779	TOSHIBA LED T8 9W 600mm 5000K	4711112387922	9W	900 LM	80	2A FUSE	NO	220°	G13	15,000h	F
00172780	TOSHIBA LED T8 9W 600mm 6500K	4711112387939									
00172781	TOSHIBA LED T8 18W 1200mm 3000K	4711112387946									
00172782	TOSHIBA LED T8 18W 1200mm 4000K	4711112387953									
00172783	TOSHIBA LED T8 18W 1200mm 5000K	4711112387960	18W	1800 LM	80	2A FUSE	NO	220°	G13	15,000h	F
00172784	TOSHIBA LED T8 18W 1200mm 6500K	4711112387977									
00172785	TOSHIBA LED T8 22W 1500mm 3000K	4711112387984									
00172786	TOSHIBA LED T8 22W 1500mm 4000K	4711112387991									
00172787	TOSHIBA LED T8 22W 1500mm 5000K	4711112388004	22W	2200 LM	80	2A FUSE	NO	220°	G13	15,000h	F
00172788	TOSHIBA LED T8 22W 1500mm 6500K	4711112388011									





# INDOOR LUMINAIRES



DOWN LIGHT STANDARD & 3CCT



WESTNET CODE	WESTNET DESCRIPTION	EAN BARCODE	WATT	LUMEN	CRI	DIM	BEAM ANGLE	PF	LIFESPAN	ENERGY CLASS
00172857	TOSHIBA LED DOWN LIGHT 4" 8W 3000K	4711112387816								
00172858	TOSHIBA LED DOWN LIGHT 4" 8W 4000K	4711112387823	8W	750 LM	80	NO	110°	≥0.5	15000h	F
00172859	TOSHIBA LED DOWN LIGHT 4" 8W 6500K	4711112387830								
00172860	TOSHIBA LED DOWN LIGHT 6" 16W 3000K	4711112387847								
00172861	TOSHIBA LED DOWN LIGHT 6" 16W 4000K	4711112387854	16W	1600 LM	80	NO	110°	≥0.5	15000h	F
00172862	TOSHIBA LED DOWN LIGHT 6" 16W 6500K	4711112387861								
00172863	TOSHIBA LED DOWN LIGHT 8" 24W 3000K	4711112387878								
00172864	TOSHIBA LED DOWN LIGHT 8" 24W 4000K	4711112387885	24W	2500 LM	80	NO	110°	≥0.5	15000h	F
00172865	TOSHIBA LED DOWN LIGHT 8" 24W 6500K	4711112387892								

WESTNET CODE	WESTNET DESCRIPTION	EAN BARCODE	WATT	LUMEN	CRI	DIM	BEAM ANGLE	PF	LIFESPAN	ENERGY CLASS
00173002	TOSHIBA LED DOWN LIGHT 4" 8W 3CCT	4711112386239	8W	750 LM	80	NO	110°	≥0.5	15000h	F
00172866	TOSHIBA LED DOWN LIGHT 6" 16W 3CCT	4711112386246	16W	1600 LM	80	NO	110°	≥0.5	15000h	F
00172867	TOSHIBA LED DOWN LIGHT 8" 24W 3CCT	4711112386253	24W	2600 LM	80	NO	110°	≥0.5	15000h	F

BACKLIT PANELS NON DIMMABLE



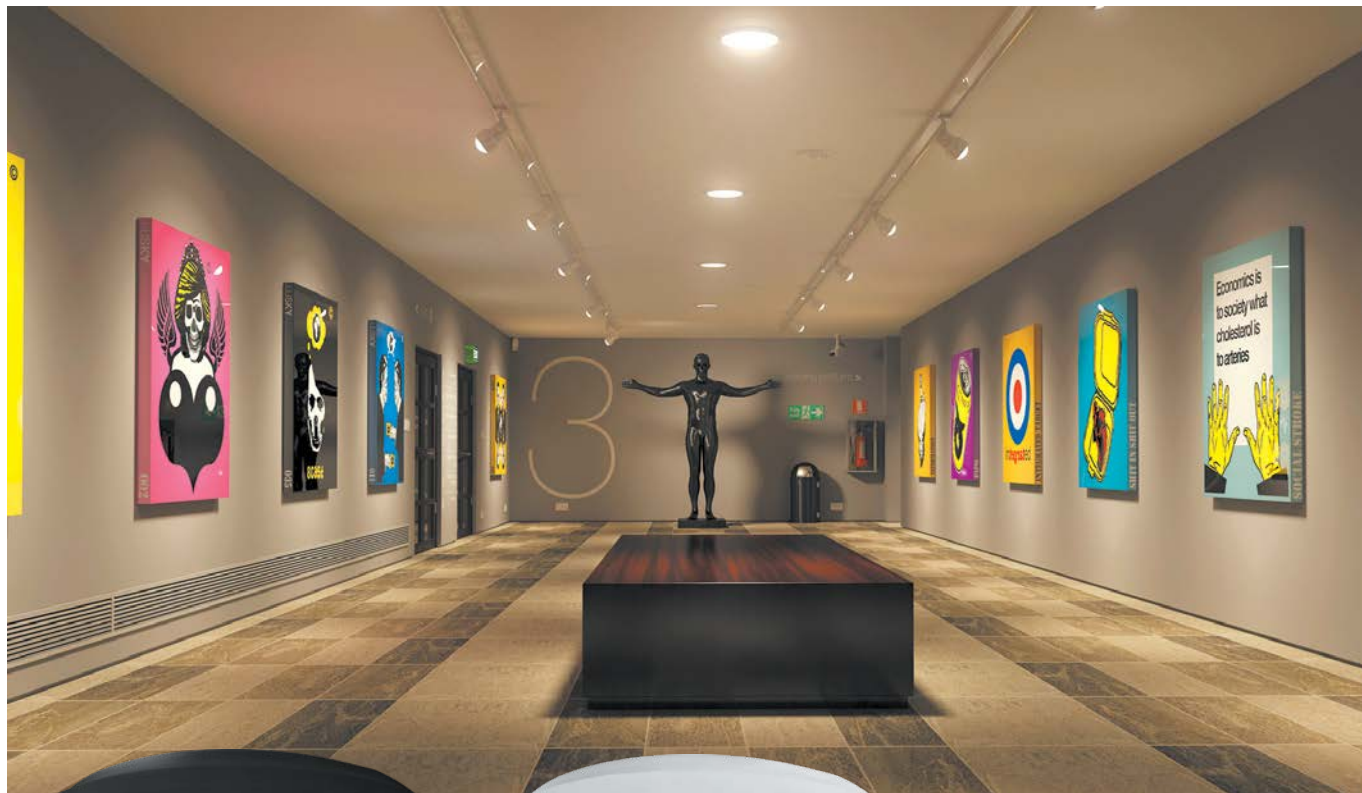
WESTNET CODE	WESTNET DESCRIPTION	EAN BARCODE	WATT	LUMEN	EFFICACY	CRI	DIM	BEAM ANGLE	UGR	PF	LIFESPAN	ENERGY CLASS
00172886	TOSHIBA LED BACKLIT PANEL 60X60 36W UGR 22 3000K	4711112387533	36W	3600 LM	100 LM/W	80	NO	120°	UGR 22	0.9	25,000h	F
00172887	TOSHIBA LED BACKLIT PANEL 60X60 36W UGR 22 4000K	4711112387540										
00172888	TOSHIBA LED BACKLIT PANEL 60X60 36W UGR 22 5000K	4711112387557										
00172889	TOSHIBA LED BACKLIT PANEL 60X60 36W UGR 22 6500K	4711112387564										
00172890	TOSHIBA LED BACKLIT PANEL STD 60X60 36W UGR<19 3000K	4711112387571	36W	3600 LM	100 LM/W	80	NO	90°	UGR<19	0.9	25,000h	F
00172891	TOSHIBA LED BACKLIT PANEL STD 60X60 36W UGR<19 4000K	4711112387588										
00172892	TOSHIBA LED BACKLIT PANEL STD 60X60 36W UGR<19 5000K	4711112387595										
00172893	TOSHIBA LED BACKLIT PANEL STD 60X60 36W UGR<19 6500K	4711112387601										
00172894	TOSHIBA LED BACKLIT PANEL STD 62X62 36W UGR<19 3000K	4711112387618	36W	3600 LM	100 LM/W	80	NO	90°	UGR<19	0.9	25,000h	F
00172913	TOSHIBA LED BACKLIT PANEL STD 62X62 36W UGR<19 4000K	4711112387625										
00172914	TOSHIBA LED BACKLIT PANEL STD 62X62 36W UGR<19 5000K	4711112387632										
00172915	TOSHIBA LED BACKLIT PANEL STD 62X62 36W UGR<19 6500K	4711112387649										
00172916	TOSHIBA LED BACKLIT PANEL STD 120X30 36W UGR<19 3000K	4711112387656										
00172917	TOSHIBA LED BACKLIT PANEL STD 120X30 36W UGR<19 4000K	4711112387663	36W	3600 LM	100 LM/W	80	NO	90°	UGR<19	0.9	25,000h	F
00172918	TOSHIBA LED BACKLIT PANEL STD 120X30 36W UGR<19 5000K	4711112387670										
00172919	TOSHIBA LED BACKLIT PANEL STD 120X30 36W UGR<19 6500K	4711112387687										
00172920	TOSHIBA LED BACKLIT PANEL PRO 60X60 36W UGR<19 3000K	4711112387694	36W	4320 LM	120 LM/W	80	NO	90°	UGR<19	0.9	25,000h	E
00172921	TOSHIBA LED BACKLIT PANEL PRO 60X60 36W UGR<19 4000K	4711112387700										
00172922	TOSHIBA LED BACKLIT PANEL PRO 60X60 36W UGR<19 5000K	4711112387717										
00172923	TOSHIBA LED BACKLIT PANEL PRO 60X60 36W UGR<19 6500K	4711112387724										
00172924	TOSHIBA LED BACKLIT PANEL PRO 62X62 36W UGR<19 3000K	4711112387731	36W	4320 LM	120 LM/W	80	NO	90°	UGR<19	0.9	25,000h	E
00172925	TOSHIBA LED BACKLIT PANEL PRO 62X62 36W UGR<19 4000K	4711112387748										
00172926	TOSHIBA LED BACKLIT PANEL PRO 62X62 36W UGR<19 5000K	4711112387755										
00172927	TOSHIBA LED BACKLIT PANEL PRO 62X62 36W UGR<19 6500K	4711112387762										
00172928	TOSHIBA LED BACKLIT PANEL PRO 120X30 36W UGR<19 3000K	4711112387779										
00172929	TOSHIBA LED BACKLIT PANEL PRO 120X30 36W UGR<19 4000K	4711112387786	36W	4320 LM	120 LM/W	80	NO	90°	UGR<19	0.9	25,000h	E
00172930	TOSHIBA LED BACKLIT PANEL PRO 120X30 36W UGR<19 5000K	4711112387793										
00172931	TOSHIBA LED BACKLIT PANEL PRO 120X30 36W UGR<19 6500K	4711112387809										

BACKLIT PANELS DIMMABLE



WESTNET CODE	WESTNET DESCRIPTION	EAN BARCODE	WATT	LUMEN	EFFICACY	CRI	DIM	BEAM ANGLE	UGR	PF	LIFESPAN	ENERGY CLASS
00172932	TOSHIBA LED BACKLIT PANEL 60X60 40W UGR<16 3000K DIP	4711112385553	34W 36W 38W 40W	3760LM 3980LM 4200LM 4420LM	110 LM/W							E
00172933	TOSHIBA LED BACKLIT PANEL 60X60 40W UGR<16 4000K DIP	4711112385560	34W 36W 38W 40W	4050LM 4285LM 4520LM 4760LM	119 LM/W	80	DIP	75°	UGR<16	0.9	50,000h	E
00172934	TOSHIBA LED BACKLIT PANEL 60X60 40W UGR<16 5000K DIP	4711112385577	34W 36W 38W 40W	4050LM 4285LM 4520LM 4760LM	119 LM/W							E
00172935	TOSHIBA LED BACKLIT PANEL 62X62 40W UGR<16 3000K DIP	4711112385584	34W 36W 38W 40W	3760LM 3980LM 4200LM 4420LM	110 LM/W							E
00172936	TOSHIBA LED BACKLIT PANEL 62X62 40W UGR<16 4000K DIP	4711112385591	34W 36W 38W 40W	4050LM 4285LM 4520LM 4760LM	119 LM/W	80	DIP	75°	UGR<16	0.9	50,000h	E
00172937	TOSHIBA LED BACKLIT PANEL 62X62 40W UGR<16 5000K DIP	4711112385607	34W 36W 38W 40W	4050LM 4285LM 4520LM 4760LM	119 LM/W							E

CEILING LIGHTS NON DIMMABLE

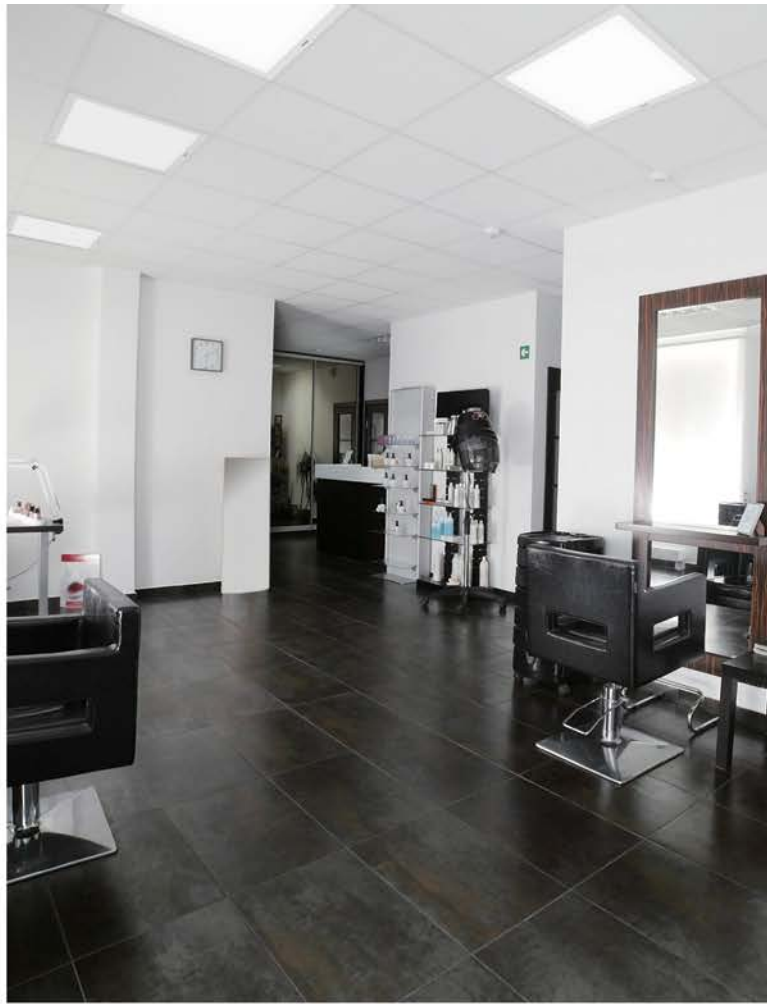


WESTNET CODE	WESTNET DESCRIPTION	EAN BARCODE	FRAME COLOR	WATT	FUNCTION	LUMEN	EFFICACY	CRI	DIM	BEAM ANGLE	PF	LIFESPAN	ENERGY CLASS
00172974	TOSHIBA LED CEILING 30 16W 3CCT (W)	4711112388141	WHITE	16W	CCT SWITCH	1600 LM	100 LM/W	80	NO	110°	>0.5	15,000h	F
00172976	TOSHIBA LED CEILING 30 16W 3CCT (B)	4711112388158	BLACK										
00172977	TOSHIBA LED CEILING 40 24W 3CCT (W)	4711112388165	WHITE	24W	CCT SWITCH	2400 LM	100 LM/W	80	NO	110°	>0.5	15,000h	F
00172978	TOSHIBA LED CEILING 40 24W 3CCT (B)	4711112388172	BLACK										
00172979	TOSHIBA LED CEILING 48 40W 3CCT (W)	4711112388189	WHITE	40W	CCT SWITCH	4000 LM	100 LM/W	80	NO	110°	>0.9	15,000h	F
00172980	TOSHIBA LED CEILING 48 40W 3CCT (B)	4711112388196	BLACK										

CEILING LIGHTS DIMMABLE



WESTNET CODE	WESTNET DESCRIPTION	EAN BARCODE	FRAME COLOR	WATT	FUNCTION	LUMEN	EFFICACY	CRI	DIM	BEAM ANGLE	PF	LIFESPAN	ENERGY CLASS
00172981	TOSHIBA LED CEILING 30 16W 3000K 3BRIGHT (W)	4711112388202	WHITE										
00172982	TOSHIBA LED CEILING 30 16W 4000K 3BRIGHT (W)	4711112388219	WHITE										
00172983	TOSHIBA LED CEILING 30 16W 6500K 3BRIGHT (W)	4711112388226	WHITE	16W	LUMEN SWITCH	1600 LM	100 LM/W	80	WALL SWITCH ON/OFF	110°	>0.5	15,000h	F
00172984	TOSHIBA LED CEILING 30 16W 3000K 3BRIGHT (B)	4711112388233	BLACK										
00172985	TOSHIBA LED CEILING 30 16W 4000K 3BRIGHT (B)	4711112388240	BLACK										
00172986	TOSHIBA LED CEILING 30 16W 6500K 3BRIGHT (B)	4711112388257	BLACK										
00172987	TOSHIBA LED CEILING 40 24W 3000K 3BRIGHT (W)	4711112388264	WHITE										
00172988	TOSHIBA LED CEILING 40 24W 4000K 3BRIGHT (W)	4711112388271	WHITE										
00172989	TOSHIBA LED CEILING 40 24W 6500K 3BRIGHT (W)	4711112388288	WHITE	24W	LUMEN SWITCH	2400 LM	100 LM/W	80	WALL SWITCH ON/OFF	110°	>0.5	15,000h	F
00172990	TOSHIBA LED CEILING 40 24W 3000K 3BRIGHT (B)	4711112388295	BLACK										
00172991	TOSHIBA LED CEILING 40 24W 4000K 3BRIGHT (B)	4711112388301	BLACK										
00172992	TOSHIBA LED CEILING 40 24W 6500K 3BRIGHT (B)	4711112388318	BLACK										
00172993	TOSHIBA LED CEILING 48 40W 3000K 3BRIGHT (W)	4711112388325	WHITE										
00172994	TOSHIBA LED CEILING 48 40W 4000K 3BRIGHT (W)	4711112388332	WHITE										
00172995	TOSHIBA LED CEILING 48 40W 6500K 3BRIGHT (W)	4711112388349	WHITE	40W	LUMEN SWITCH	4000 LM	100 LM/W	80	WALL SWITCH ON/OFF	110°	>0.9	15,000h	F
00172996	TOSHIBA LED CEILING 48 40W 3000K 3BRIGHT (B)	4711112388356	BLACK										
00172997	TOSHIBA LED CEILING 48 40W 4000K 3BRIGHT (B)	4711112388363	BLACK										
00172998	TOSHIBA LED CEILING 48 40W 6500K 3BRIGHT (B)	4711112388370	BLACK										

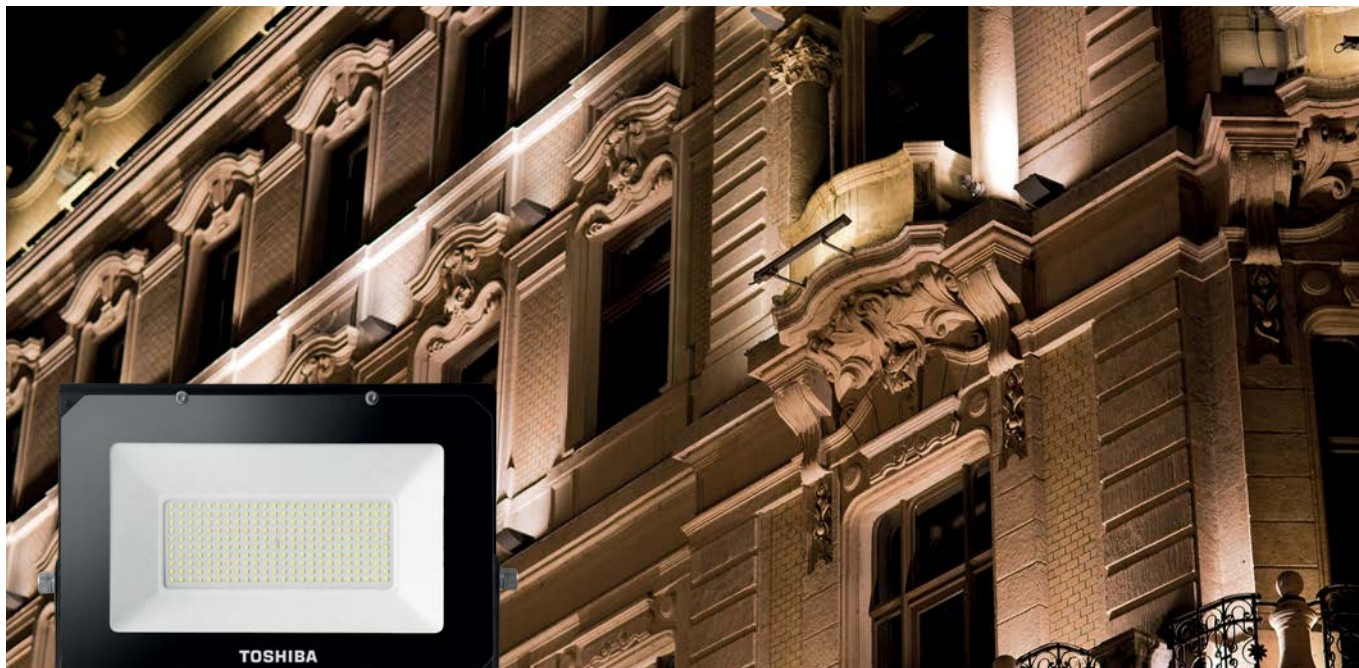


# OUTDOOR & INDUSTRIAL LUMINAIRES





FLOOD LIGHTS BLACK SHELL



WESTNET CODE	WESTNET DESCRIPTION	EAN BARCODE	SHELL	WATT	LUMEN	CRI	DIM	BEAM ANGLE	PF	LIFESPAN	ENERGY CLASS
00172828	TOSHIBA LED FLOOD LIGHT IP65 10W 6500K (B)	4711112386093									
00172829	TOSHIBA LED FLOOD LIGHT IP65 10W 5000K (B)	4711112385485	BLACK	10W	740 LM	80	NO	120°	0.9	15,000h	F
00172830	TOSHIBA LED FLOOD LIGHT IP65 10W 4000K (B)	4711112383986									
00172831	TOSHIBA LED FLOOD LIGHT IP65 10W 3000K (B)	4711112386109									
00172832	TOSHIBA LED FLOOD LIGHT IP65 20W 6500K (B)	4711112386116									
00172833	TOSHIBA LED FLOOD LIGHT IP65 20W 5000K (B)	4711112385492	BLACK	20W	1530 LM	80	NO	120°	0.9	15,000h	F
00172834	TOSHIBA LED FLOOD LIGHT IP65 20W 4000K (B)	4711112383993									
00172835	TOSHIBA LED FLOOD LIGHT IP65 20W 3000K (B)	4711112386123									
00172836	TOSHIBA LED FLOOD LIGHT IP65 30W 6500K (B)	4711112386130									
00172837	TOSHIBA LED FLOOD LIGHT IP65 30W 5000K (B)	4711112385508									
00172838	TOSHIBA LED FLOOD LIGHT IP65 30W 4000K (B)	4711112384006	BLACK	30W	2450 LM	80	NO	120°	0.9	15,000h	F
00172839	TOSHIBA LED FLOOD LIGHT IP65 30W 3000K (B)	4711112386147									
00172840	TOSHIBA LED FLOOD LIGHT IP65 50W 6500K (B)	4711112386154									
00172841	TOSHIBA LED FLOOD LIGHT IP65 50W 5000K (B)	4711112385515	BLACK	50W	4050 LM	80	NO	120°	0.9	15,000h	F
00172842	TOSHIBA LED FLOOD LIGHT IP65 50W 4000K (B)	4711112384013									
00172843	TOSHIBA LED FLOOD LIGHT IP65 50W 3000K (B)	4711112386161									
00172845	TOSHIBA LED FLOOD LIGHT IP65 100W 6500K (B)	4711112386178	BLACK	100W	8350 LM	80	NO	120°	0.9	15,000h	F
00172846	TOSHIBA LED FLOOD LIGHT IP65 100W 5000K (B)	4711112385522									
00172847	TOSHIBA LED FLOOD LIGHT IP65 100W 4000K (B)	4711112384020									
00172848	TOSHIBA LED FLOOD LIGHT IP65 100W 3000K (B)	4711112386185									
00172849	TOSHIBA LED FLOOD LIGHT IP65 150W 6500K (B)	4711112386192	BLACK	150W	12400 LM	80	NO	120°	0.9	15,000h	F
00172850	TOSHIBA LED FLOOD LIGHT IP65 150W 5000K (B)	4711112385539									
00172851	TOSHIBA LED FLOOD LIGHT IP65 150W 4000K (B)	4711112384037									
00172852	TOSHIBA LED FLOOD LIGHT IP65 150W 3000K (B)	4711112386208									
00172853	TOSHIBA LED FLOOD LIGHT IP65 200W 6500K (B)	4711112386215									
00172854	TOSHIBA LED FLOOD LIGHT IP65 200W 5000K (B)	4711112385546	BLACK	200W	16500 LM	80	NO	120°	0.9	15,000h	F
00172855	TOSHIBA LED FLOOD LIGHT IP65 200W 4000K (B)	4711112384044									
00172856	TOSHIBA LED FLOOD LIGHT IP65 200W 3000K (B)	4711112386222									

FLOOD LIGHTS WHITE SHELL



WESTNET CODE	WESTNET DESCRIPTION	EAN BARCODE	SHELL	WATT	LUMEN	CRI	DIM	BEAM ANGLE	PF	LIFESPAN	ENERGY CLASS
00173300	TOSHIBA LED FLOOD LIGHT IP65 10W 6500K (W)	4711112388547									
00173301	TOSHIBA LED FLOOD LIGHT IP65 10W 5000K (W)	4711112388554	WHITE	10W	740 LM	80	NO	120°	0.9	15,000h	F
00173302	TOSHIBA LED FLOOD LIGHT IP65 10W 4000K (W)	4711112388561									
00173303	TOSHIBA LED FLOOD LIGHT IP65 10W 3000K (W)	4711112388578									
00173304	TOSHIBA LED FLOOD LIGHT IP65 20W 6500K (W)	4711112388585									
00173305	TOSHIBA LED FLOOD LIGHT IP65 20W 5000K (W)	4711112388592	WHITE	20W	1530 LM	80	NO	120°	0.9	15,000h	F
00173306	TOSHIBA LED FLOOD LIGHT IP65 20W 4000K (W)	4711112388608									
00173307	TOSHIBA LED FLOOD LIGHT IP65 20W 3000K (W)	4711112388615									
00173308	TOSHIBA LED FLOOD LIGHT IP65 30W 6500K (W)	4711112388622									
00173309	TOSHIBA LED FLOOD LIGHT IP65 30W 5000K (W)	4711112388639	WHITE	30W	2450 LM	80	NO	120°	0.9	15,000h	F
00173310	TOSHIBA LED FLOOD LIGHT IP65 30W 4000K (W)	4711112388646									
00173311	TOSHIBA LED FLOOD LIGHT IP65 30W 3000K (W)	4711112388653									
00173312	TOSHIBA LED FLOOD LIGHT IP65 50W 6500K (W)	4711112388660									
00173313	TOSHIBA LED FLOOD LIGHT IP65 50W 5000K (W)	4711112388677	WHITE	50W	4050 LM	80	NO	120°	0.9	15,000h	F
00173314	TOSHIBA LED FLOOD LIGHT IP65 50W 4000K (W)	4711112388684									
00173315	TOSHIBA LED FLOOD LIGHT IP65 50W 3000K (W)	4711112388691									
00173316	TOSHIBA LED FLOOD LIGHT IP65 100W 6500K (W)	4711112388707									
00173317	TOSHIBA LED FLOOD LIGHT IP65 100W 5000K (W)	4711112388714	WHITE	100W	8350 LM	80	NO	120°	0.9	15,000h	F
00173318	TOSHIBA LED FLOOD LIGHT IP65 100W 4000K (W)	4711112388721									
00173319	TOSHIBA LED FLOOD LIGHT IP65 100W 3000K (W)	4711112388738									
00173320	TOSHIBA LED FLOOD LIGHT IP65 150W 6500K (W)	4711112388745									
00173321	TOSHIBA LED FLOOD LIGHT IP65 150W 5000K (W)	4711112388752	WHITE	150W	12400 LM	80	NO	120°	0.9	15,000h	F
00173322	TOSHIBA LED FLOOD LIGHT IP65 150W 4000K (W)	4711112388769									
00173323	TOSHIBA LED FLOOD LIGHT IP65 150W 3000K (W)	4711112388776									
00173324	TOSHIBA LED FLOOD LIGHT IP65 200W 6500K (W)	4711112388783									
00173325	TOSHIBA LED FLOOD LIGHT IP65 200W 5000K (W)	4711112388790	WHITE	200W	16500 LM	80	NO	120°	0.9	15,000h	F
00173326	TOSHIBA LED FLOOD LIGHT IP65 200W 4000K (W)	4711112388806									
00173327	TOSHIBA LED FLOOD LIGHT IP65 200W 3000K (W)	4711112388813									

HIGH BAY 110° NON DIMMABLE



WESTNET CODE	WESTNET DESCRIPTION	EAN BARCODE	WATT	LUMEN	EFFICACY	CRI	DIM	BEAM ANGLE	PF	LIFESPAN	ENERGY CLASS
00172870	TOSHIBA LED HIGHBAY STD IP65 100W 110D 4000K	4711112383054	100W	12900 LM	129 LM/W	80	NO	110°	0.95	50,000h	D
00172871	TOSHIBA LED HIGHBAY STD IP65 100W 110D 5000K	4711112383061									
00172874	TOSHIBA LED HIGHBAY STD IP65 150W 110D 4000K	4711112383108	150W	20000 LM	133.3 LM/W	80	NO	110°	0.95	50,000h	D
00172875	TOSHIBA LED HIGHBAY STD IP65 150W 110D 5000K	4711112383092									
00172878	TOSHIBA LED HIGHBAY STD IP65 200W 110D 4000K	4711112383139	200W	26300 LM	131.5 LM/W	80	NO	110°	0.95	50,000h	D
00172879	TOSHIBA LED HIGHBAY STD IP65 200W 110D 5000K	4711112383146									

HIGH BAY 60°/ 90° NON DIMMABLE



WESTNET CODE	WESTNET DESCRIPTION	EAN BARCODE	WATT	LUMEN	EFFICACY	CRI	DIM	BEAM ANGLE	PF	LIFESPAN	ENERGY CLASS
00172868	TOSHIBA LED HIGHBAY STD IP65 100W 60D 4000K	4711112383030	100W	12000 LM	120 LM/W	80	NO	60°	0.95	50,000h	D
00172869	TOSHIBA LED HIGHBAY STD IP65 100W 90D 4000K	4711112383047		13000 LM	130 LM/W			90°			
00172872	TOSHIBA LED HIGHBAY STD IP65 150W 60D 4000K	4711112383078	150W	18500 LM	123.3 LM/W	80	NO	60°	0.95	50,000h	D
00172873	TOSHIBA LED HIGHBAY STD IP65 150W 90D 4000K	4711112383085		19900 LM	132.6 LM/W			90°			
00172876	TOSHIBA LED HIGHBAY STD IP65 200W 60D 4000K	4711112383115	200W	24500 LM	122.5 LM/W	80	NO	60°	0.95	50,000h	D
00172877	TOSHIBA LED HIGHBAY STD IP65 200W 90D 4000K	4711112383122		26500 LM	132.5 LM/W			90°			

HIGH BAY PRO DIMMABLE



WESTNET CODE	WESTNET DESCRIPTION	EAN BARCODE	WATT	LUMEN	EFFICACY	CRI	DIM	BEAM ANGLE	PF	LIFESPAN	ENERGY CLASS
00172880	TOSHIBA LED HIGHBAY PRO IP65 100W 120D 4000K DIM	4711112385423	100W	17,000 LM	170 LM/W	70	1-10 V	120°	0.9	50,000h	B
00172881	TOSHIBA LED HIGHBAY PRO IP65 100W 120D 5000K DIM	4711112385430									
00172882	TOSHIBA LED HIGHBAY PRO IP65 150W 120D 4000K DIM	4711112385447	150W	25,500 LM	170 LM/W	70	1-10 V	120°	0.9	50,000h	B
00172883	TOSHIBA LED HIGHBAY PRO IP65 150W 120D 5000K DIM	4711112385454									
00172884	TOSHIBA LED HIGHBAY PRO IP65 200W 120D 4000K DIM	4711112385461	200W	34,000 LM	170 LM/W	70	1-10 V	120°	0.9	50,000h	B
00172885	TOSHIBA LED HIGHBAY PRO IP65 200W 120D 5000K DIM	4711112385478									

WEATHERPROOF

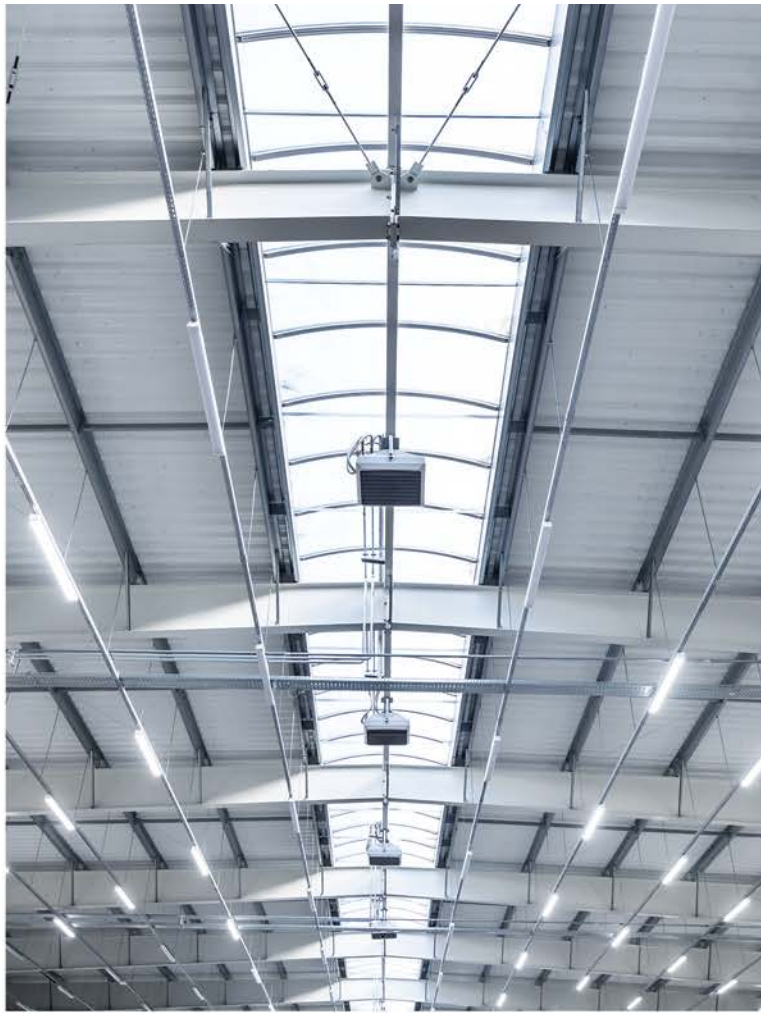
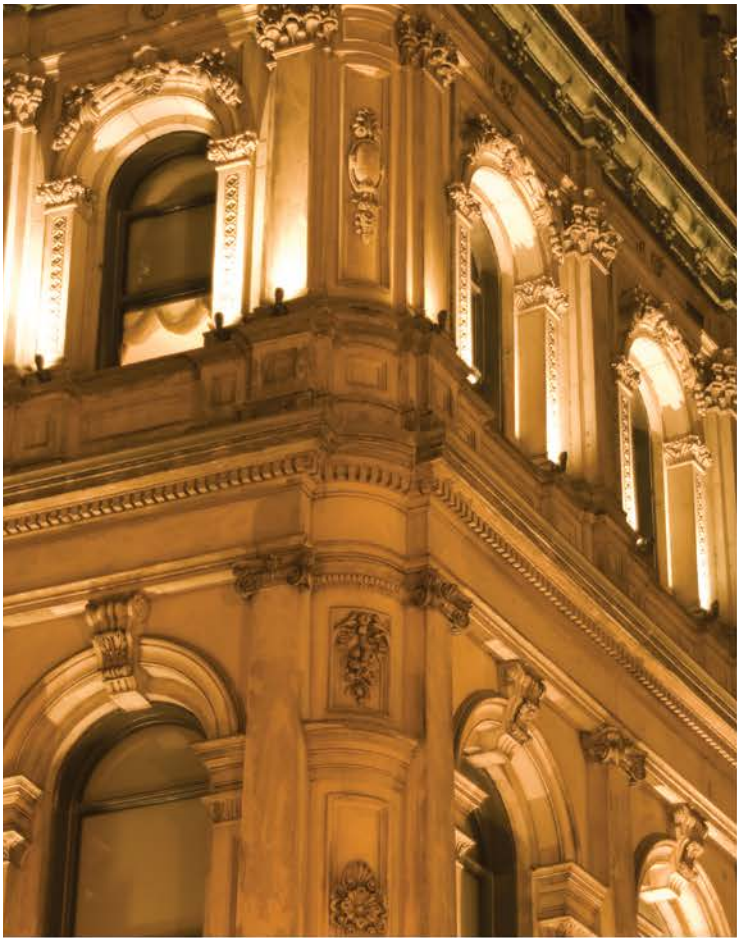


WESTNET CODE	WESTNET DESCRIPTION	EAN BARCODE	WATT	LUMEN	EFFICACY	CRI	DIM	BEAM ANGLE	PF	LIFESPAN	ENERGY CLASS
00172942	TOSHIBA LED WEATHERPROOF 4FT 40W 4000K	4711112386314	40W	4600 LM	115 LM/W	80	NO	130°	0.9	50,000h	E
00172943	TOSHIBA LED WEATHERPROOF 4FT 40W 5000K	4711112386321									
00172944	TOSHIBA LED WEATHERPROOF 5FT 60W 4000K	4711112386338	60W	6900 LM	115 LM/W	80	NO	130°	0.9	50,000h	E
00172946	TOSHIBA LED WEATHERPROOF 5FT 60W 5000K	4711112386345									

TRIPROOF



WESTNET CODE	WESTNET DESCRIPTION	EAN BARCODE	WATT	LUMEN	EFFICACY	CRI	DIM	BEAM ANGLE	PF	LIFESPAN	ENERGY CLASS
00172938	TOSHIBA LED TRIPROOF 4FT 30W 4000K	4711112386277	30W	3900 LM	130 LM/W	80	NO	120°	0.9	50,000h	E
00172939	TOSHIBA LED TRIPROOF 4FT 30W 5000K	4711112386284									
00172940	TOSHIBA LED TRIPROOF 5FT 40W 4000K	4711112386291	40W	5200 LM	130 LM/W	80	NO	120°	0.9	50,000h	E
00172941	TOSHIBA LED TRIPROOF 5FT 40W 5000K	4711112386307									





## TOSHIBA LED LIGHTING STANDS



STAND PAPER  
TOSHIBA LED 5S



STAND PAPER  
TOSHIBA LED 4S



STAND METALLIC  
TOSHIBA LED HOOKS 2X3

WESTNET CODE	WESTNET DESCRIPTION	MATERIAL	WIDTH	DEPTH	HEIGHT
00172315	STAND PAPER TOSHIBA LED 5S	CARTON	60 CM	40 CM	130CM
00172471	STAND PAPER TOSHIBA LED 4S	CARTON	40 CM	40 CM	110 CM
00173128	STAND METALLIC TOSHIBA LED HOOKS 2X3	METALLIC	20.5 CM	20 CM	53 CM

# TOSHIBA

## LED LIGHTING



 **westnet**  
distributing the future

[www.mywestnet.com](http://www.mywestnet.com)

MEMBER OF  OLYMPIA GROUP